

PART OF THE SE.1/4, OF SEC. 36, T.8N., R.1E., S.L.B. & M.  
POWDER MOUNTAIN WEST SUBDIVISION — PHASE 4

119

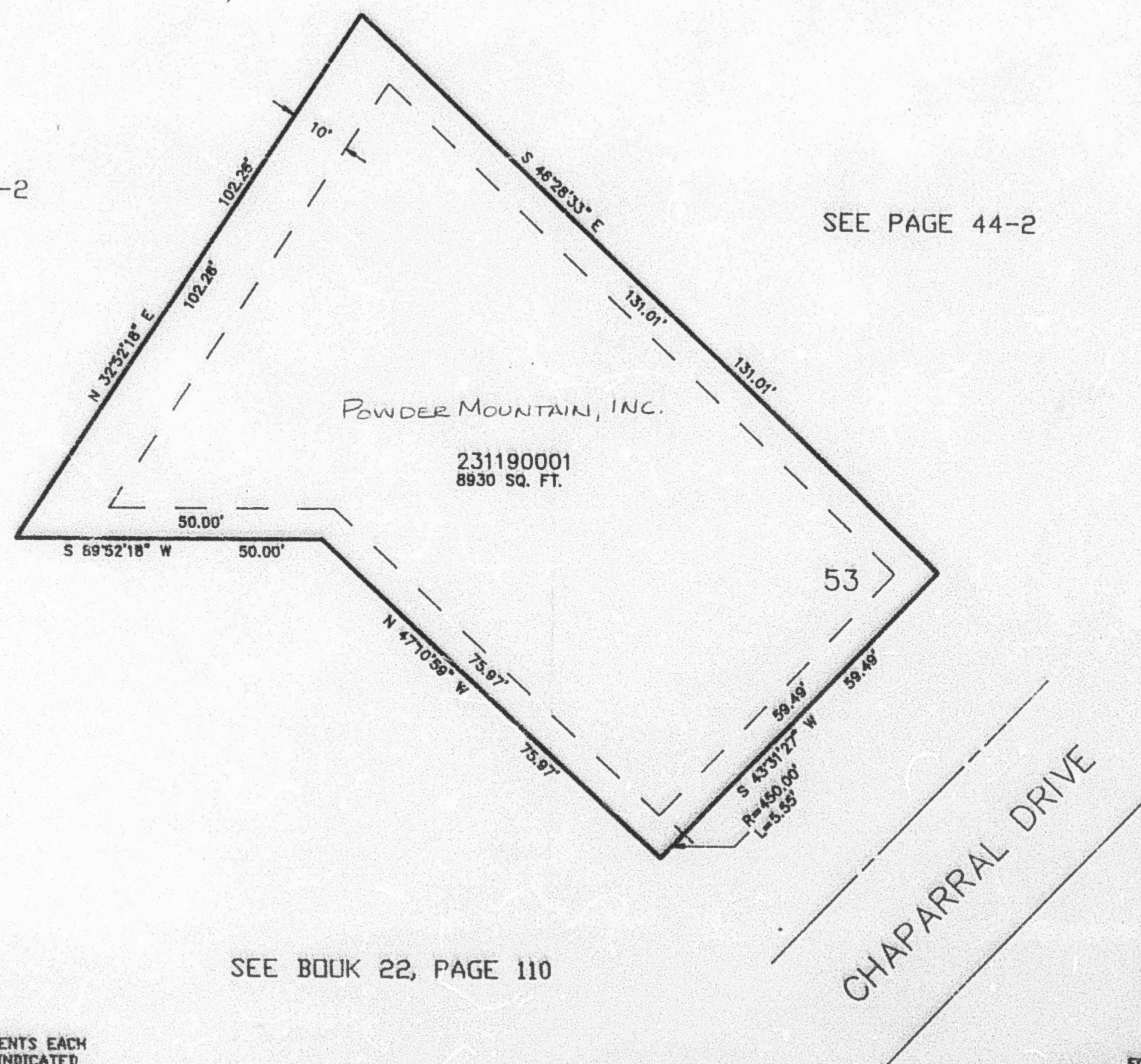
IN WEBER COUNTY

SCALE 1" = 20'

TAXING UNIT: 90

SEE PAGE 44-2

SEE PAGE 44-2



5' UTILITY & DRAINAGE EASEMENTS EACH  
SIDE OF PROPERTY LINES AS INDICATED  
BY DASHED LINES EXCEPT AS OTHERWISE  
SHOWN.

FOR COMPLETE ENG DATA SEE  
ORIGINAL DEDICATION PLAT IN  
BOOK 40, PAGE 36 OF RECORDS.